

# EMANUEL COUNTY PROFILE

## GEORGIA HI-LO

---

June 2023

Prepared by:



# Topics Covered

1. Planning Questions and Stakeholder Responses
2. Trail Alignment and Key Destinations
3. Alignment Matrix

# Responses to Planning Questions

## What are Emanuel County's goals in relation to trails?

1. Economic development
2. Health and wellness
3. Bring people together
4. Redevelopment
5. Visible access to attractions

## Who are we building the trail for?

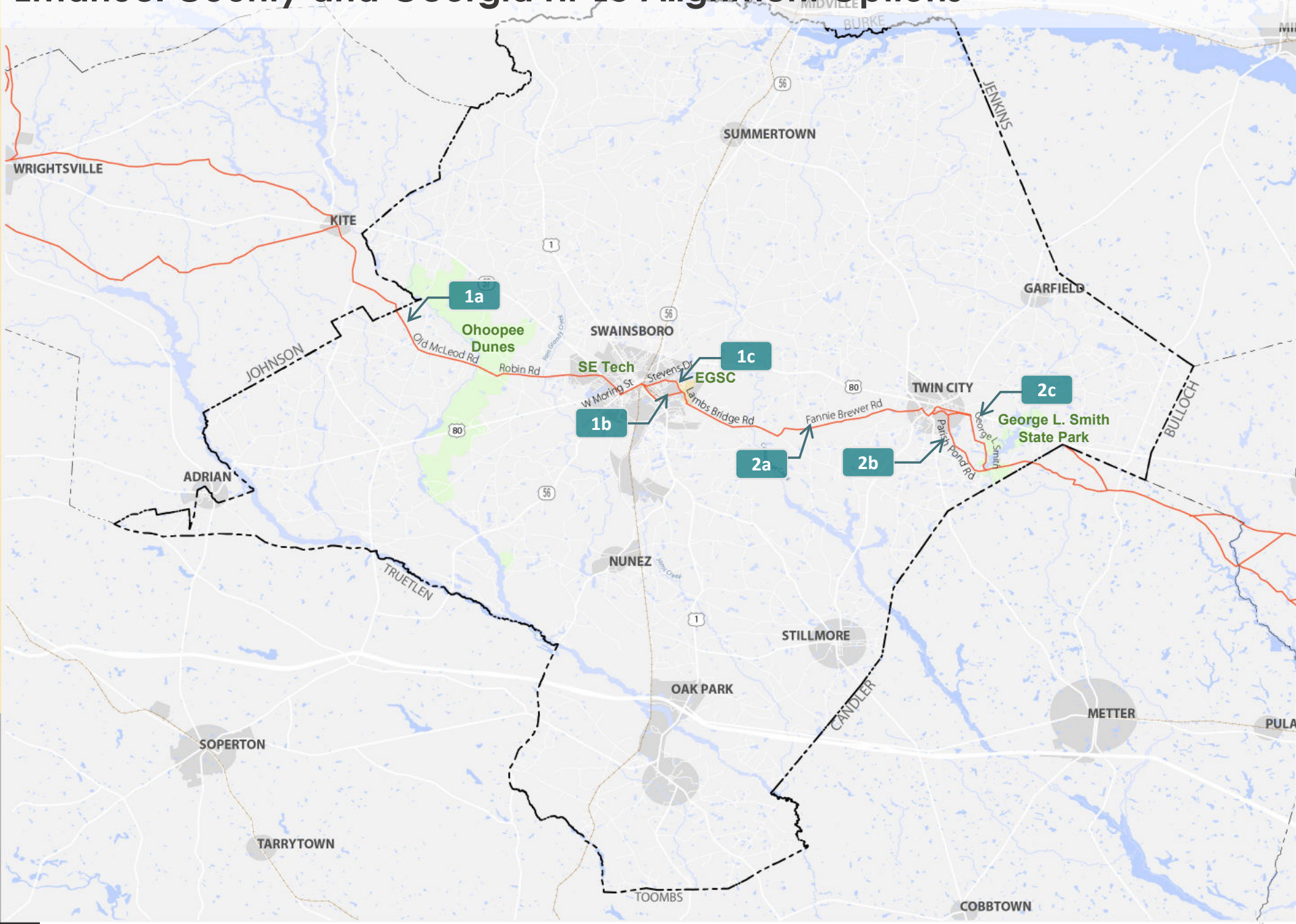
1. Tourist-oriented businesses
2. Families
3. Students going to college
4. Social groups
5. Residents accessing nature

## What are the key destinations in Emanuel County?

1. East Georgia State College
2. Southeastern Tech College
3. Downtown Swainsboro
4. Downtown Twin City
5. George L. Smith State Park
6. Ochoopee Dunes NWR



# Emanuel County and Georgia Hi-Lo Alignment Options



# Trail Alignment Matrix

ID	Roads	Material	Traffic Volume	Destinations	Length (miles)
1	Old McLeod Rd	Paved	Low	Ochoopee Dunes	2.97
	Robin Rd	Dirt	Low	Ochoopee Dunes	4.76
	W Moring St	Paved	Medium	Swainsboro	0.91
1a	Moreland Ave	Paved	Medium		0.79
	Thigpen Dr	Paved	Medium		0.92
1b	Stevens Dr	Paved	Medium		1.31
	Thigpen Dr	Paved	Medium		1.03
2	Lambs Bridge Rd	Paved	Medium	EGSC	3.57
	Fannie Brewer Rd	Paved/Dirt	Low	Twin City	5.40
2a	Parish Pond Rd	Paved	Medium	Twin City	2.92
	Bethel Church Rd	Dirt	Low		1.73
2b	George L Smith State Park Rd	Paved	High	George L Smith State Park	4.74

# Alignment Photos



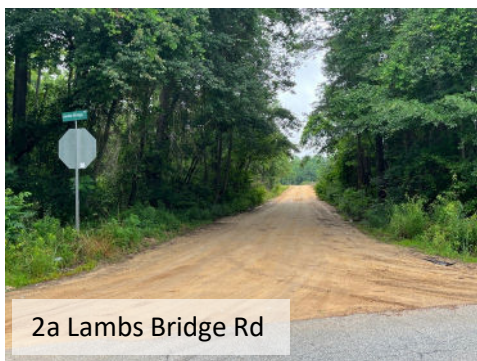
1a Old McLeod Rd



1a Swainsboro West



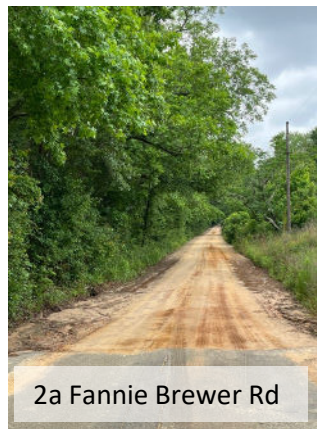
1c Swainsboro East



2a Lambs Bridge Rd



2a Fannie Brewer Rd



2a Fannie Brewer Rd



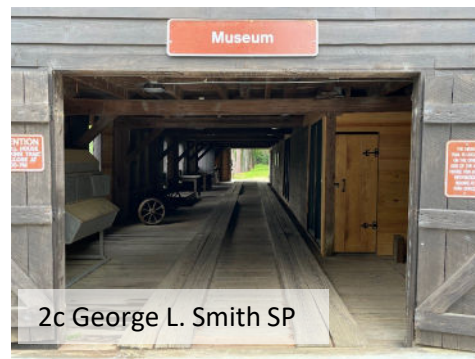
2a Twin City



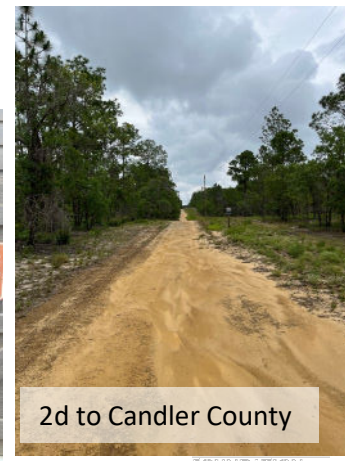
2b Parrish Pond Rd



2c George L. Smith SP



2c George L. Smith SP



2d to Candler County

# Next Steps

- Stakeholder Meeting – July 13, 2023 3 – 4p
  - **Sudie Fulford Community Center?**
- **Public Meeting – Thurs. July 13, 2023 6 – 7:30p**
  - **Sudie Fulford Community Center?**
  - Once we have the location, please post this to your social media and other outreach channels
- Draft Plan for Review - August
- Final Plan for Adoption - September